

METO hand labelers have been the number 1 on the market since 1959. And for good reason: METO hand labelers offer maximum efficiency. They are ergonomically shaped and allow characters and digits to be selected in a swift, straightforward and flexible manner.

METO hand labelers have been optimised according to scientific findings to ensure superior convenience, versatility and ergonomics for applications in the retail, service and industrial sectors.

Our range comprises models with 5 to 36 digits in 1 to 3 printing lines, dispensers and labelers with consecutive numbering for the clear identification and labeling of merchandise. We can also produce sets of printer tapes tailored to your requirements.



## HAND LABELING SOLUTIONS

# METO EAGLE



## METO EAGLE®

The professional hand labeler meets the demand of high volume labeling.

- semi-automativ label loading
- clean and easy ink refill
- comfortable softgrip
- ready to use
- clear and precise print
- modern fonts
- durable
- solid label transport
- economical and efficient
- customizable
- full service



For price marking and identification in Gift Shops, Apparel Stores, Consumer Electronics, Food Retail, Petrol Stations, Book Stores, Health & Beauty, Perfumery, Drugstore, Sports Store, Toys, DIY, Supermarket, Catering, Fast Food, Medical institutions, as well as Manufacturers & Distribution Centres, supplying above mentioned retailers.

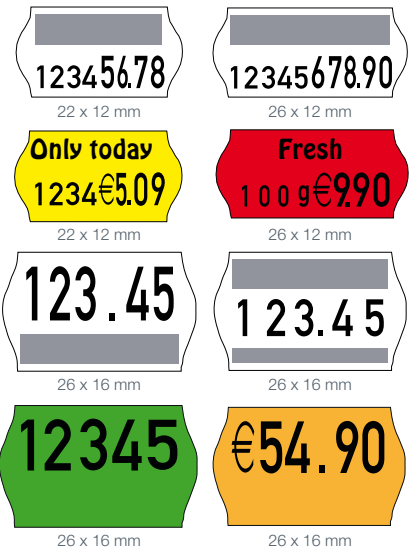


## METO EAGLE® S

1-line hand labeler with 5-10 printing digits 5 and 5,7 mm high, suitable for 22 x 12 mm and 26 x 12 mm wavy edge labels.

## METO EAGLE® S Giant

1-line hand labeler with 5 & 6 printing Digits 7,3 mm high, suitable for 26x16mm wavy edge labels.

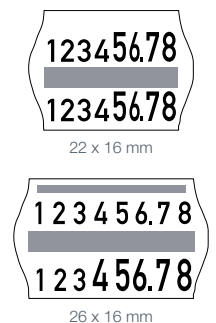


Grey space for individual logo or text



## METO EAGLE® M

2-line hand labeler with up to 20 printing digits (10 upper / 10 lower line) suitable for 22 x 16 mm and 26 x 16 mm wavy edge labels.



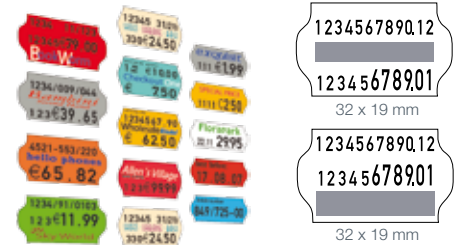
Grey space for individual logo or text

Art. nos on request, depending on the printhead layouts



### METO EAGLE® L

2-line hand labeler with up to 24 printing digits (12 Upper / 12 lower line) suitable for 32 x 19 mm wavy edge labels.

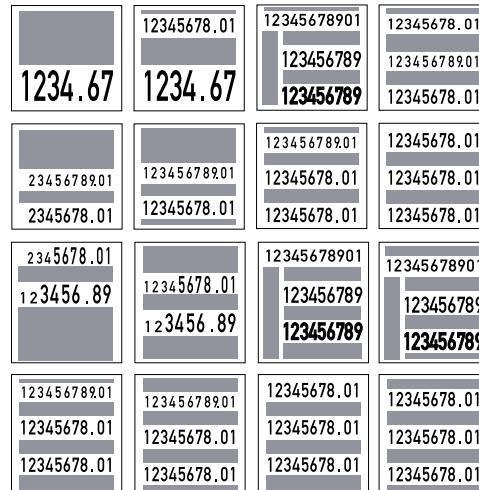


Grey space for individual logo or text



### METO EAGLE® XL

1 Line hand labeler with 7 giant in one line,  
2 Line hand labeler with 7 big digits in lower line and 12 small digits in upper line  
3 Line hand labeler with up to 36 printing digits (12 in each line)  
Suitable for 29 x 28 mm rectangular labels.



29 x 32 mm

Grey space for individual logo or text

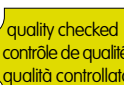


### METO EAGLE® Dispenser

Ideal for instore promotion

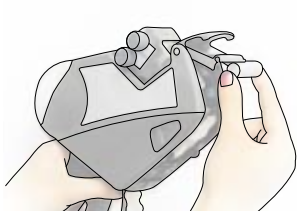
Hand labeler to dispense promotional labels  
22 x 12 / 26 x 12 / 26 x 12 / 26 x 16 mm wavy edge

- Art. no.: 9425372 22 x 12 mm
- Art. no.: 9425373 22 x 16 mm
- Art. no.: 9425374 26 x 12 mm
- Art. no.: 9425375 26 x 16 mm
- Art. no.: 9447362 32 x 19 mm
- Art. no.: 9447363 29 x 28 mm
- Art. no.: 9447366 29 x 32 mm



Art. nos on request, depending on the printhead layouts

# METO EAGLE CONSUMABLES AND ACCESSORIES

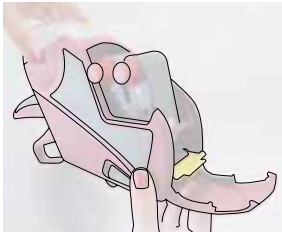


## METO EAGLE® S / M inkroll

- Art. no.: 9321597 Standard
- Art. no.: 9321597 Standard Giant
- Art. no.: 9321605 UV resistant for plastic labels
- Art. no.: 9321600 UV resistant Giant for plastic labels
- Art. no.: 9440952 PA ink, dries fast



**Unit quantity: 5 pcs. per pack**  
**(suitable for min. 1 box of labels per inkroll)**



## METO EAGLE® L / XL inkroll

- Art. no.: 8873170 Standard (L / XL)
- Art. no.: 8873195 UV resistant for plastic labels (L/XL)
- Art. no.: 9323062 Standard Giant (XL)



**Unit quantity: 2 pcs. per pack**  
**(suitable for min. 1 box of labels per inkroll)**



## Sideplate METO EAGLE® S / M left for customizing

- Art. no.: 9321581 transparent, without hole
- Art. no.: 9321582 transparent, with hole
- Art. no.: 9321575 grey for customizing to engrave logo, text, phone no. etc.



**Unit quantity: 1**

Sideplate left logo label for laserprinter on DIN A4 sheet for customizing

- Art. no.: 9447368

**Unit quantity: 10 sheets per pack (4 logos per sheet)**

## Sideplate METO EAGLE® L / XL left for customizing

- Art. no.: 9322557 transparent METO EAGLE L
- Art. no.: 9323578 transparent METO EAGLE XL

Grey for customizing to engrave logo, text, phone no. etc.

- Art. no.: 9322554 METO EAGLE L
- Art. no.: 9323574 METO EAGLE XL

**Unit quantity: 1**

Sideplate left logo label for laserprinter on DIN A4 sheet for customizing

- Art. no.: 9423003

**Unit quantity: 10 sheets per pack (4 logos per sheet)**



# METO EAGLE ACCESSORIES



## Handle insert

- Art. no.: 9442112 Hardgrip S/M
- Art. no.: 9321566 Softgrip S/M
- Art. no.: 9442112 Hardgrip L
- Art. no.: 9445771 Hardgrip XL

Unit quantity: 10 pcs. per pack



## Long neck adapter

Incl. transport to apply a label on corners, edges and curved products. Suitable for 26 x 12 and 26 x 16 mm labels.

- Art. no.: 9321173 · 22 x 12 mm and 22 x 16 mm
- Art. no.: 9321075 · 24 x 12 mm and 26 x 16 mm

Unit quantity: 1



Special Sale

Jade Plant

new price  
2,99€

Jade Plant  
31.12.2009

2 for 1  
only today

Pampas Grass  
10.12.09 02

we are on holiday  
17.08. -  
31.08.

Pampas Grass  
12345678 /02  
310309 23841

## METO EAGLE® FixPrint

Print your own promotion and information label

The new technology of the METO EAGLE FixPrint hand labeling tool, makes it one of the fastest and most flexible hand labeler in the market. Just one turn to print words and numbers in one step.

METO EAGLE **S** 1 line for 12 different words  
22 x 12 / 26 x 12 mm wavy edge labels

METO EAGLE **M** 2 lines for 14 different words each line  
or 1 line Text and 1 line numeric and signs  
22 x 16 / 26 x 16 mm wavy edge labels

METO EAGLE **L** 2 lines for 12 different words each line  
or 1 line Text and 1 line numeric and signs  
32 x 19 mm wavy edge labels

METO EAGLE **XL** 3 lines for 15 different words each line  
or 1 line Text and 2 lines numeric and signs  
29 x 28 mm rectangular labels

SPECIAL SALES

Employee  
No. 11

on holiday  
Dec.1 - 10

ONLY TODAY  
2 FOR FREE

KEEP  
COOL

# METO PROLINE CLASSIC



## METO ProLine® Classic

The Classic hand labeler meets the demand of medium to high volume labeling.

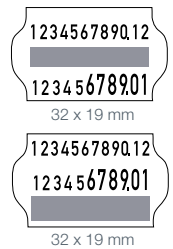
- UPD technology for consistent print quality
- Lightweight
- Ergonomic design
- Easy refill
- Smooth & solid Label transport
- Durable & reliable
- Wide Range of standard character set-up adaptable to suit most used applications
- CE certified

For marking and identification in manufacturing, Distribution Centres, and retailers.



## METO ProLine® L

2-line hand labeler with up to 24 printing digits (12 Upper / 12 lower line) suitable for 32 x 19 mm wavy edge labels.

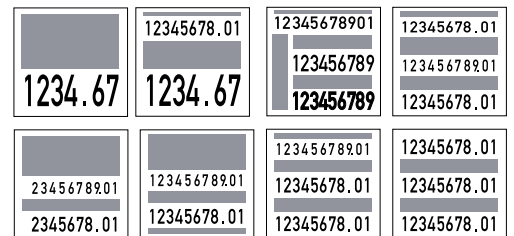


Grey space for individual logo or text



## METO ProLine® XL

1-line hand labeler with 7 giant in one line,  
2-line hand labeler with 7 big digits in lower line and 12 small digits in upper line  
3-line hand labeler with up to 36 printing digits (12 in each line)  
Suitable for 29 x 28 mm rectangular labels.



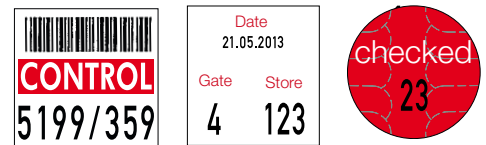
29 x 28 mm

Grey space for individual logo or text



## METO ProLine® XXL

The Giant 2-line hand labeler, specially designed for industrial application, such as storage information reliably attached to a pallet regardless of humidity and temperature.  
Suitable for 36 x 35 mm rectangular and 33 mm circular labels.



## METO ProLine® Dispenser

- Art. no.: 8144744 Dispenser ProLine L (label 32 x 19 mm)
- Art. no.: 9313551 Dispenser ProLine XL (label 36 x 35 mm rect. / 33 mm circular)
- Art. no.: 9313593 Dispenser ProLine XXL (label 36 x 35 mm rect. / 33 mm circular)

Unit quantity: 1

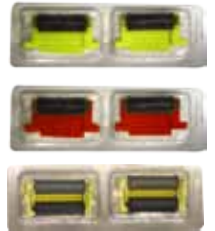


# METO PROLINE CLASSIC CONSUMABLES

## METO ProLine® L / XL / XXL

- Art. no.: 8873170 Standard (L / XL)
- Art. no.: 8873195 UV resistant for plastic labels (L / XL)
- Art. no.: 9323062 Standard Giant (XL)
- Art. no.: 8888190 Standard (XXL)
- Art. no.: 9324008 UV resistant for plastic labels (XXL)

**Unit quantity: 2 pcs. per pack**  
**(suitable for min. 1 box of labels per inkroll)**



# METO HAND LABELER



Clean and easy ink refill.